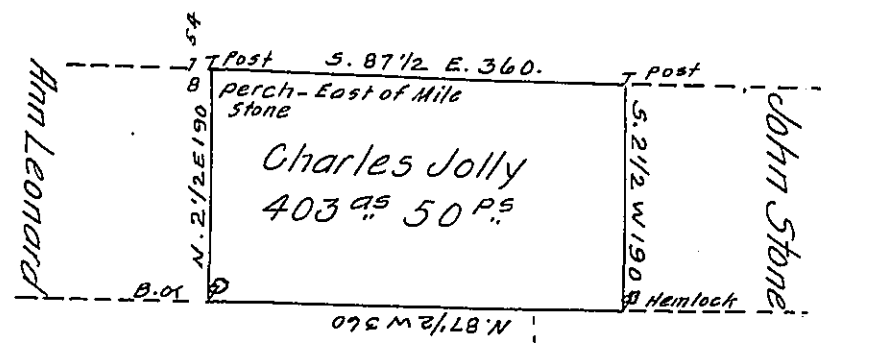


State of New York



John Jolly Sam! Hockley

By virtue of a Warrant dated 17th August 1793. Surveyed 11th September 1793 to Charles Jolly the above tract of Land. Situate on the Waters of Wapping Creek in Luzerne County and adjoining the State Line at the fifty third mile Stone. Containing four hundred and three acres and fifty perches and allowance of Six & Cent for Roads.

Anty. Crothers -

To Daniel Brogdhead Esquire
Surveyor Gen!

IN TESTIMONY that the above is a copy of the original remaining on file in the Department of Internal Affairs of Pennsylvania, made conformably to an Act of Assembly approved the 16th day of February, 1833, I have hereunto set my Hand and caused the Seal of said Department to be affixed at Harrisburg, this twenty first day of January 1908.

Henry Howard

Secretary of Internal Affairs.